



Blast and Recovery System



BRSII

(Blast & Recovery System II)

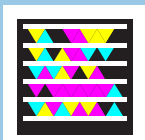


- Features Schmidt TVII and ComboValve
- Optional High Flow Auto Air Valve for applications with large nozzles
- Moisture separator and media vibrator ensure consistent flow of abrasive
- Optional high efficiency secondary cyclone extends dust collector filter life
- Four-cartridge dust collector with automatic pulse jet to minimize clogging of dust filters
- Reclaimer features large, quick-opening door to access screen

Vessel shown with optional 50 Hp electric vacuum blower

The Schmidt BRS 2 is a high productivity system that is capable of using a wide range of abrasive media to remove coatings and corrosion. Featuring heavy duty construction and quality components, this system is ideal for bridge and road maintenance, barge and ship cleaning, rail car facilities and many other steel and concrete cleaning applications.

Blast and Recover in ONE Step



Pressure Vessel

13.5 CF 30" dia. ASME Sect VIII coded pressure vessel rated for 150 psig
90° cone bottom
(2) 6" x 8" Handways

Blast Controls

(2) 1½ Thompson Valve II (polyurethane sleeve) with automatic air valve
G2 Pneumatic deadman controls with 55' twinline ComboValve blowdown

Hopper/Reclaimer

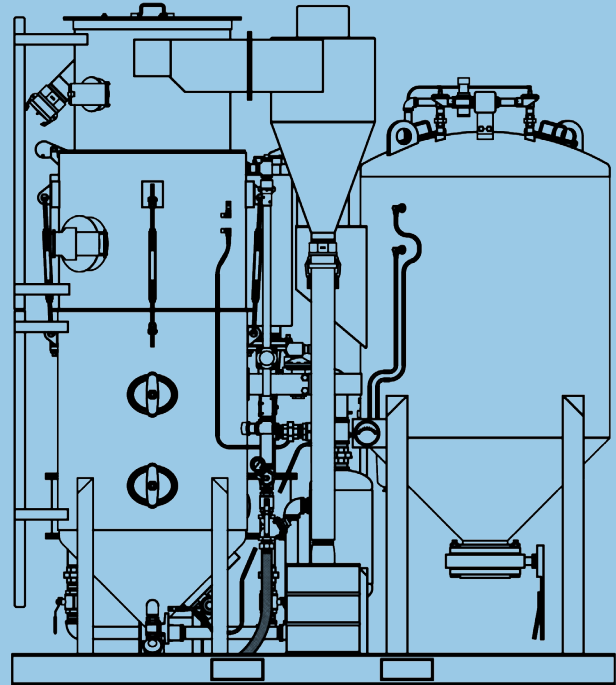
30" dia. 10.5 CF above pressure vessel
Turnbuckle Hold Down for easy removal
30" dia. Plate Flange cover
10" dia. Spider/Pop-up Access door
6" dia. Screen Access door
Vibrating screen with 1/4" perforated screen
Adjustable air wash

Secondary Cyclone

20" dia. rectangular entry design
High-efficiency design to reduce loading of dust collector
60° cone bottom with 4" camlock drain

Dust Collector

48" dia. vessel with 90° cone bottom
8" dia. dust drain with butterfly valve
(4) Four cartridge design (4 paper filters included)
23" x 30" door for easy access to all cartridges
(2) 8" dia. pulse piping access hatches
Automatic 120VAC pulse controls with (4) Four Goyen pulse valves
Magnehelic gage for filter sensing
(1) Hi-attenuation blower silencer (approx. 85dB)



Options Available

Electric Controls (per outlet) (specify voltage)
Remote Abrasive Cutoff *Pneumatic* (per outlet)
Remote Abrasive Cutoff *Electric* (per outlet)
+Shipyard Lifting Frame
20 CF 36" dia. vessel (dished bottom)
10 CF Double Chamber w/ Combo Probe
*40 HP Electric Vacuum Blower
*50 HP Electric Vacuum Blower
*40 HP Diesel Driven Blower
Dual Eductors